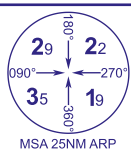


SHERBURN-IN-ELMET

RWY 10

(ACFT CAT A,B)



A/G	122.610
-----	---------

SHERBURN RADIO

AD ELEVATION

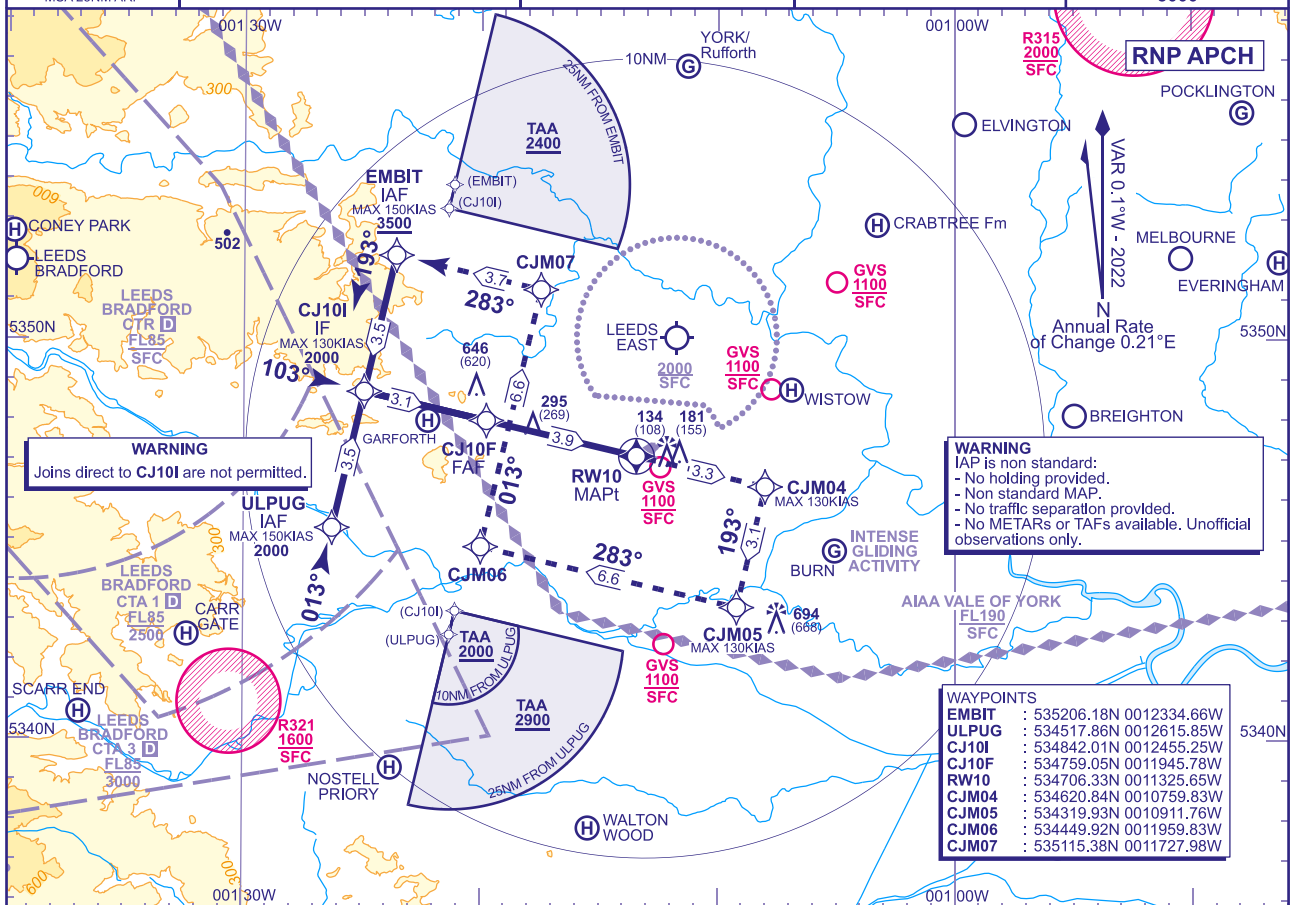
26

THR ELEVATION

26

OBSTACLE ELEVATION
694 AMSL
(668) (ABOVE THR)

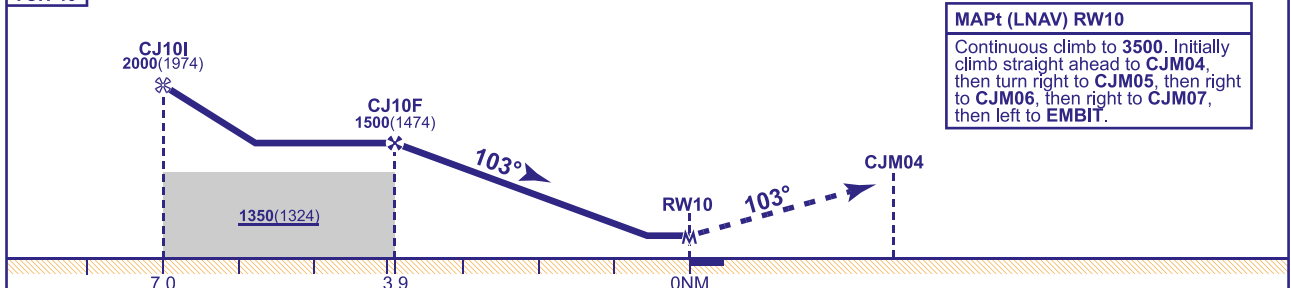
TRANSITION ALTITUDE
3000



RECOMMENDED PROFILE Gradient 6.12%, 372FT/NM

NM to RW10	3	2
ALT(HGT)	1180(1154)	810(784)

TCH 40



MAPt (LNAV) RW10

Continuous climb to **3500**. Initially climb straight ahead to **CJM04**, then turn right to **CJM05**, then right to **CJM06**, then right to **CJM07**, then left to **EMBIT**.

Aircraft Category		A	B	Rate of descent	G/S KT	160	140	120	100	80
OCA (OCH)	LNAV	550(524)	550(524)		FT/MIN	990	870	740	620	500
VM(C)OCA (OCH AAL)	Total Area	630(604)	630(604)							

NOTE 1 CAUTION: Procedure lies close to Leeds CTA/CTR. Aircraft not in receipt of a zone transit clearance must remain clear.

2 CAUTION: Proximity of Leeds East Airport, 3NM to the North.

CHANGE (13/23): GVS RICCALL REMOVED.

AERO INFO DATE 03 OCT 23

AD 2-EGCJ-8-1